

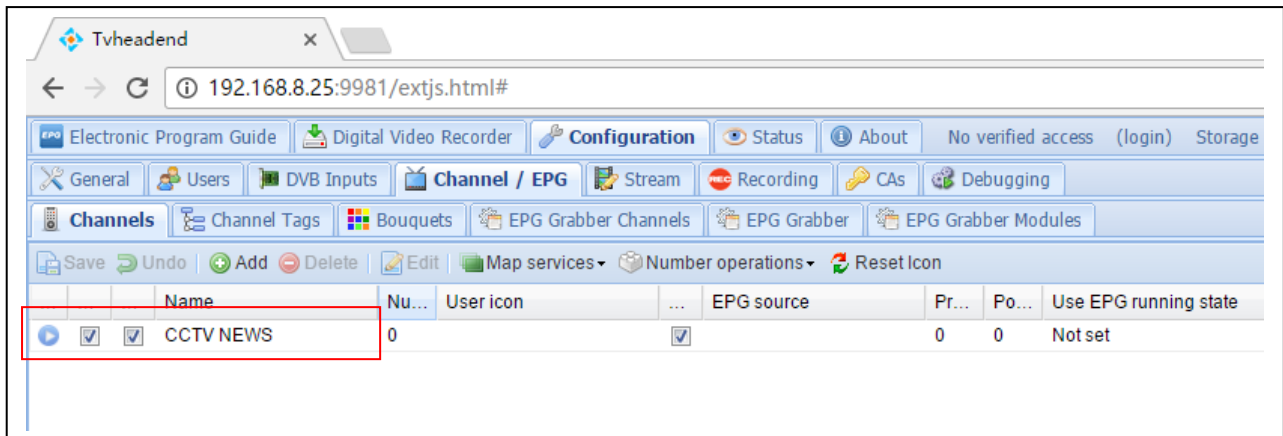
How to Record Channels in Tvheadend

Hi all,

Some of our customers want to record the channels which received by tuner card in Tvheadend, the following explanation will guide you how to deal with this.

First:

Run tvheadend, configure your tuner card to receive channels and then stream them out, check "Channel/ EPG" item to make sure the channels were streamed out successfully:



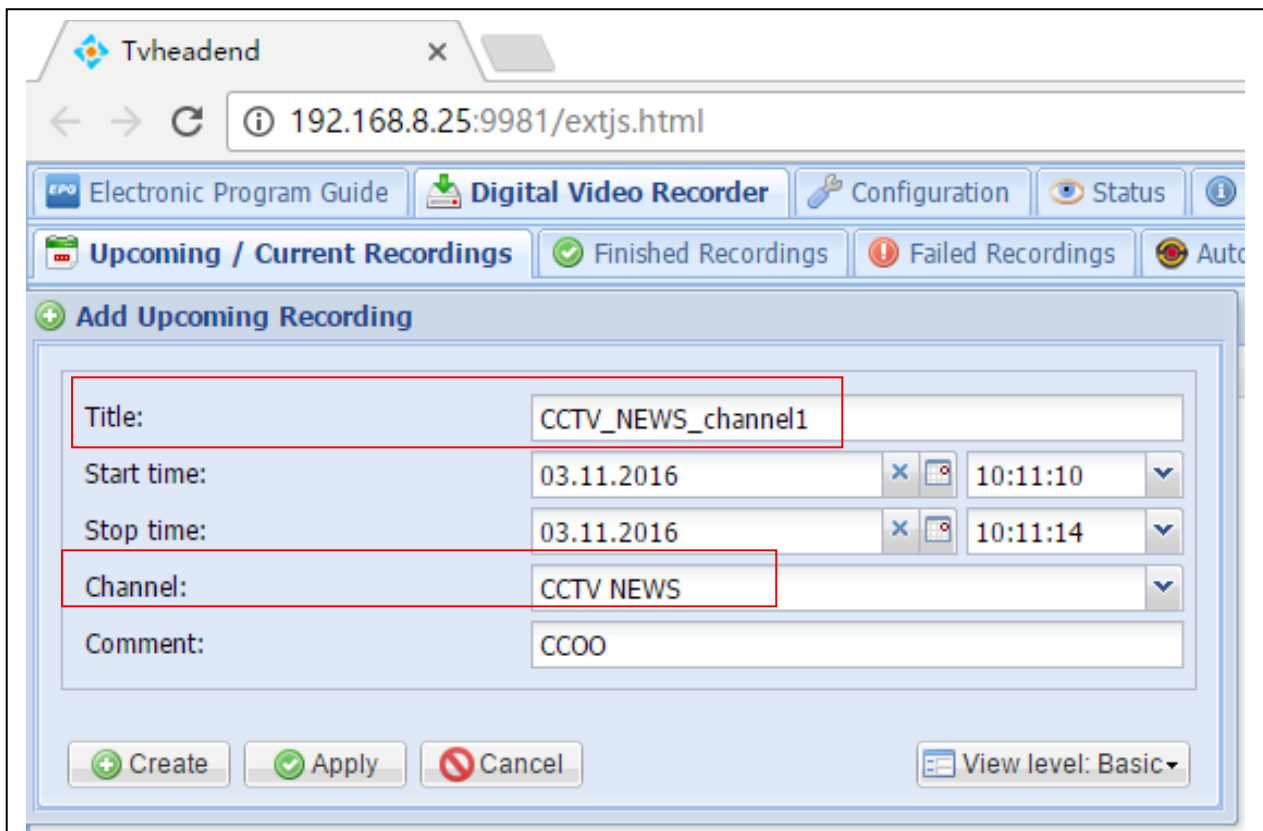
More details about how to use Tvheadend, please visit the following website:
https://www.youtube.com/watch?v=f5-b1w-4v_A

Second:

Make sure your server time and your computer's time is identical when you are using our MOI PRO AMD web page login, if it's not the same please correct it otherwise your record will be failed.

Third:

Click "Digital Video Recorder" item, then "Upcoming/Current Recording" item, click "add" to add a Upcoming Recording like this:



Video Record in tvheadend

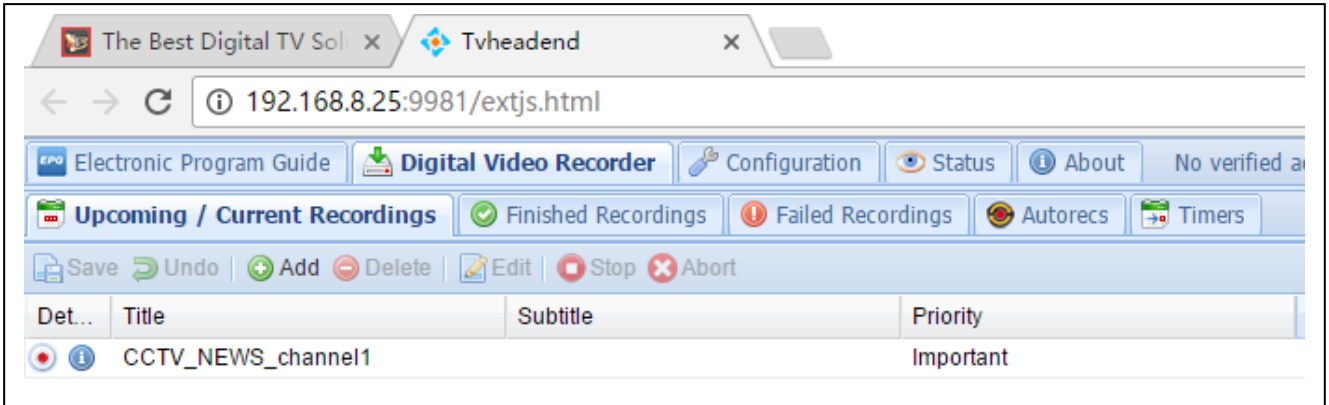
Title is the subject about this record file, you can describe yourself.

Channel is the program which you map out.

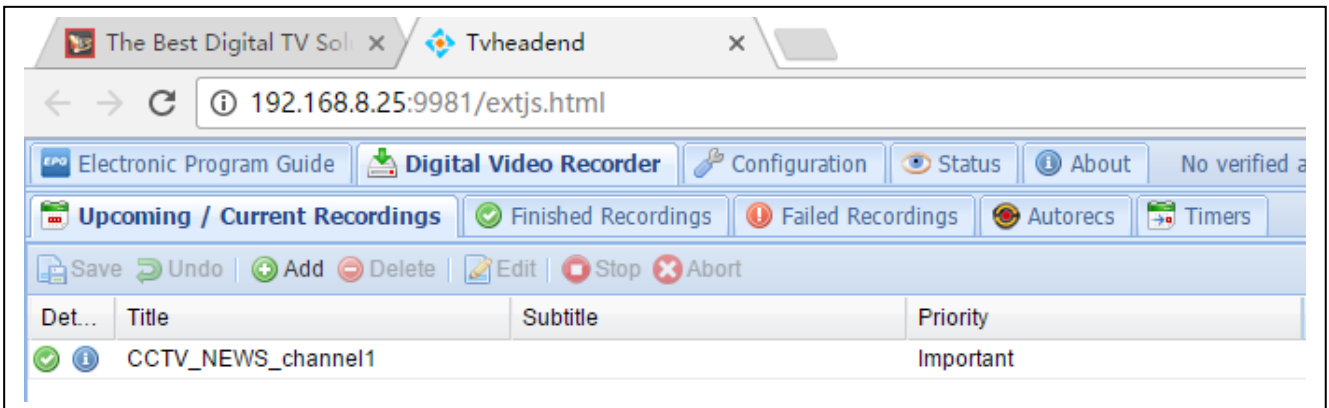
Comment is a text filed, not used for anything else, or you can enter something you want.

Fourth:

Click "Create", it wil begin to record, like this:



After record finished, it will remind you:



Video Record in tvheadend

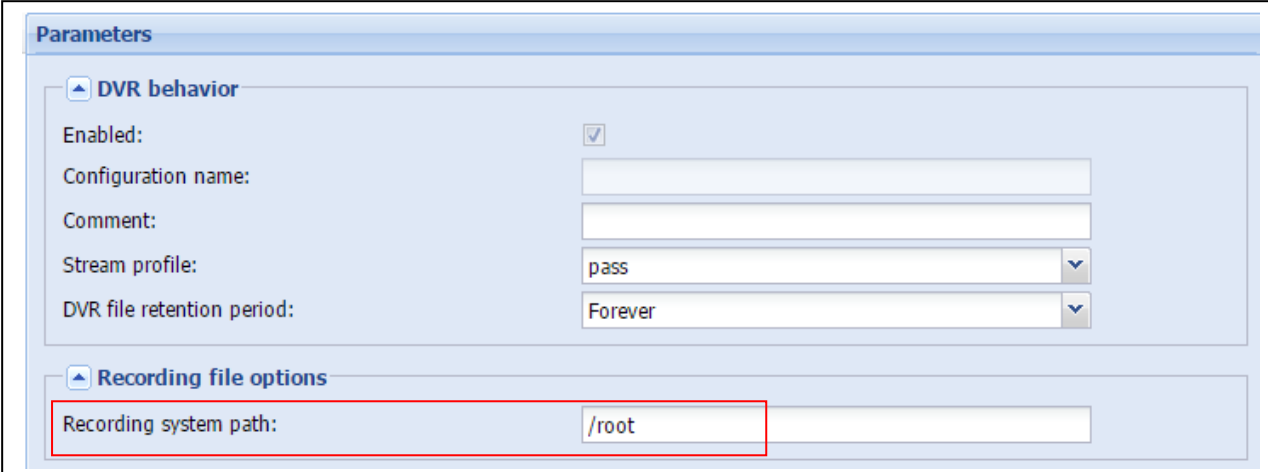
Fifth:

Now, you can login MOI PRO AMD by SAMBA in your computer, "Start"—"Run" item—enter "[\\192.168.8.25](http://192.168.8.25)", then open the "root" folder, it's the default folder where your video saved:



| 名称 | 修改日期 | 类型 | 大小 |
|--------------------|-----------------|---------|-----------|
| Digest-SHA | 2016/11/1 15:29 | 文件夹 | |
| dvblast_cfg | 2015/6/30 18:04 | 文件夹 | |
| opensource_driver | 2016/11/1 11:26 | 文件夹 | |
| anaconda-ks.cfg | 2015/6/10 11:53 | CFG 文件 | 1 KB |
| CCTV_NEWS_channel1 | 2016/11/2 10:07 | TS 文件 | 76,666 KB |
| download | 2016/9/21 9:12 | 文件 | 45 KB |
| dvb | 2016/9/7 11:55 | CONF 文件 | 1 KB |

If you want to change its storage directory, you can click "Configuration"—"Recording"—"Digital Video Recorder Profiles" item to change it:



Parameters

DVR behavior

Enabled:

Configuration name:

Comment:

Stream profile:

DVR file retention period:

Recording file options

Recording system path:

Now, you can enjoy the record channels, these channels which we recorded all are TS format streams, you can install a media player like VLC to play.

Any more questions please contact with our technical support team support@tbsdtv.com.

Best Regards,

TBS Support Team

Email: support@tbsdtv.com

Website: www.tbsdtv.com