

Hi all,

Good news that TBS2603/TBS2630 has a new feature released “HLS (M3U8) protocol is supported”. Users who own TBS2603/TBS2630 and require this new feature please contact with us to get the latest fw:

support@tbsdtv.com

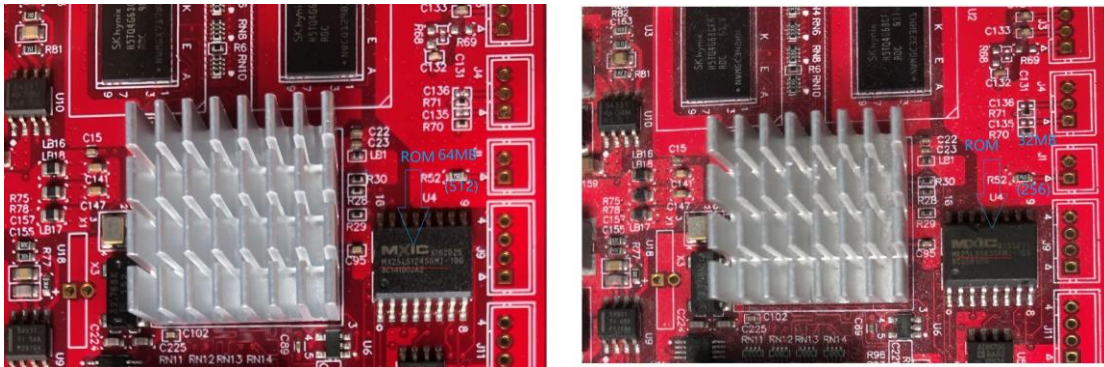
support@tbsiptv.com

For TBS2603/TBS2630 we have 2 kinds of Rom (Flash), one is 32MB ROM, and the other is 64MB ROM.

Those users who own “32MB” ROM will not able to enjoy this new feature. Cause “HLS fw” package is big, and also, there’re too many contents inside, 32MB version will not have plenty spaces to install this package.

Before to ask for the new fw, please check your ROM capacity first:

Silkscreen with words “512” is 64MB ROM, and silkscreen with with words “256” is 32MB ROM.



Thanks