
User Guide-TBS2631

Contents

1. OVERVIEW	2
2. Stream setting	3
3. Streaming Preview	4
4. Remove Water-mark.....	5
5. Add Logo	5

1. Overview

TBS2631 8-Channel HDMI Encoder can realize 8-channel HDMI collection, real-time HD encoding and RTMP forwarding. Compared with current mainstream coding machine solution, its coding efficiency increased by 50%, power consumption drop 65%, 80% reduction in volume. It is an innovative network HD broadcast coding machine.

1.1 Features:

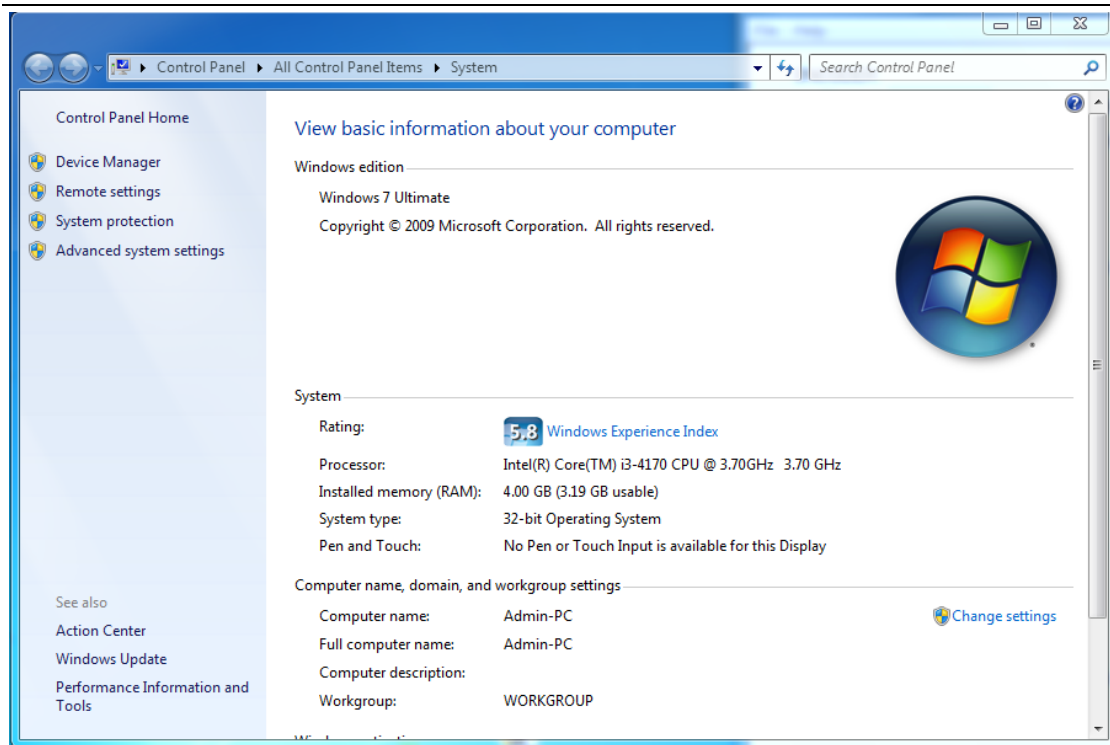
- 8 channel HDMI capture, real-time HD encoding
- RTMP streams into IPTV streaming media server
- UDP/RTP streams for End user media App directly
- Support 720P resolution Only
- Remove water-mark dynamically (only 3 channels from totally 8 channels)
- Support multiple equipments display at the same time on a computer
- 1U chassis , low power consumption, less than 70W
- Greatly save on network traffic, electricity and space usage

1.2 Hardware Overview:

> 1U chassis, low power consumption, less than 70W



> Based on Windows 7 Ultimate:

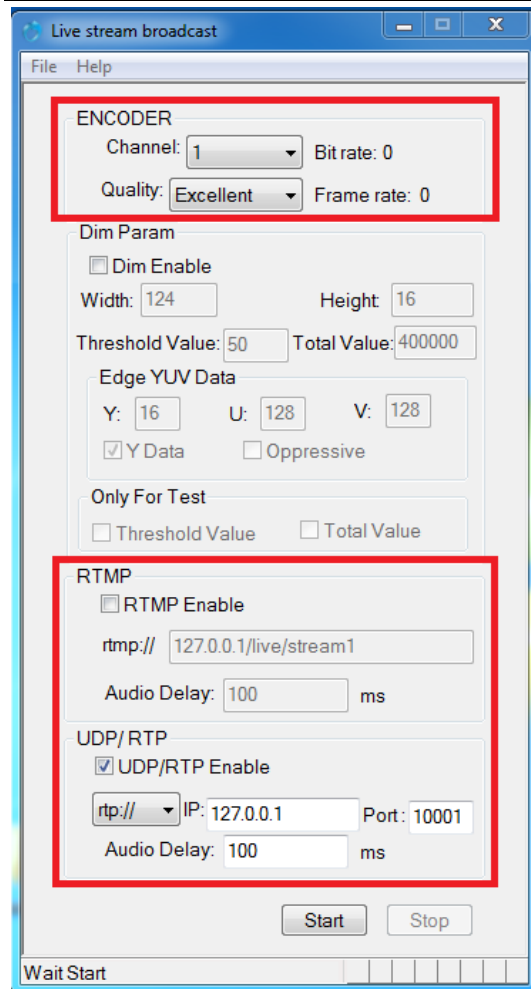


2. Stream setting



2.1 Click software “Live Stream Broadcast” to start setting.

2.2 Streaming port and protocol setting:



> Set 1-8 channels one by one

> Select streaming Quality: Excellent, Good, Fair, Poor, or Mobile.

> RTMP Streaming setting: Click “RTMP Enable” to start RTMP streaming.

Note: RTPM stream is mainly for IPTV streaming media server, like FMS or WOWZA.

> UDP/RTP Streaming setting: Click “UDP/RTP Enable” to start UDP/RTP streaming.

Note:

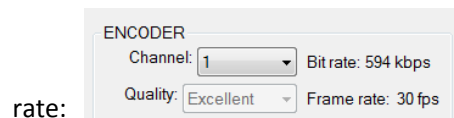
1. UDP/RTP stream can be visited by End user App directly, like VLC.

2. To visit UDP stream, the IP address should be added “@”. For example:

udp://@127.0.0.1:10001

> Click “Start” and wait about 5 seconds.

Once it starts streaming, you will see the Bit



PS: RTMP protocol should be setting according to the streaming media server.

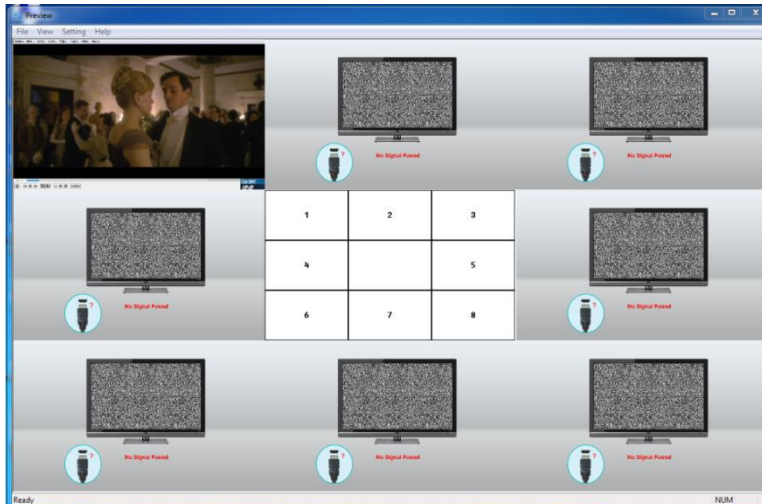
> Xteam codes’ default setting is rtmp://serverip:8001/input/name

> Wowza default setting is rtmp://serverip:1935/live/name

3. Streaming Preview:



Click software “Preview” to monitor the streaming condition

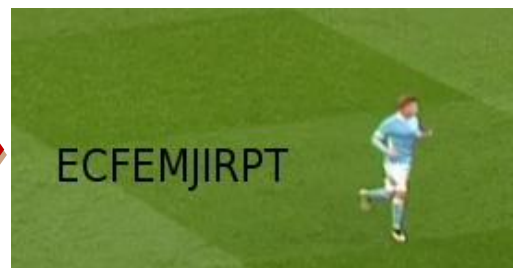
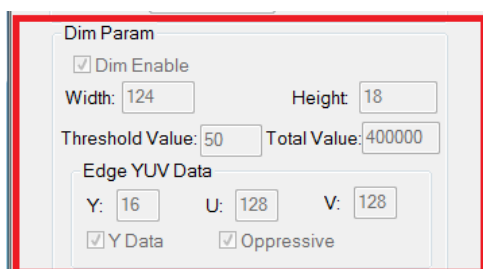


Note: If you stream 8 channels simultaneously, you'd better close the "Preview" after checking the streaming condition. Or else the "Preview" will occupy too much CUP to affect the streaming quality.

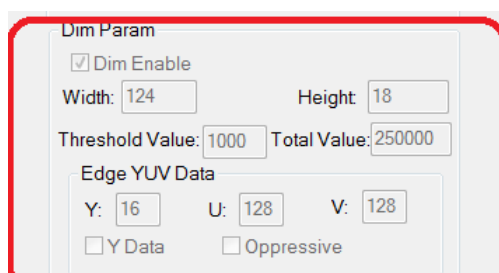
4. Remove Water-mark

"Dim Param" setting is for removing the Water-mark.

4.1 Remove pure codes water-mark setting:



4.2 Remove Background codes water-mark setting"



5. Add Logo

- > Design your logo in PNG format, with size about 100x80px.
- > Send to PNG format Logo picture to TBS Technologies Ltd. Our engineers will help to transform it to a DAT document and a TXT document.
- > Copy these two documents to **C:\Program Files\TSLiveStreamEncoder_RTMP_UDPSEnder\stationdat.**
- > Parameters in Position.txt can be changed to modify the logo's position.

.... END